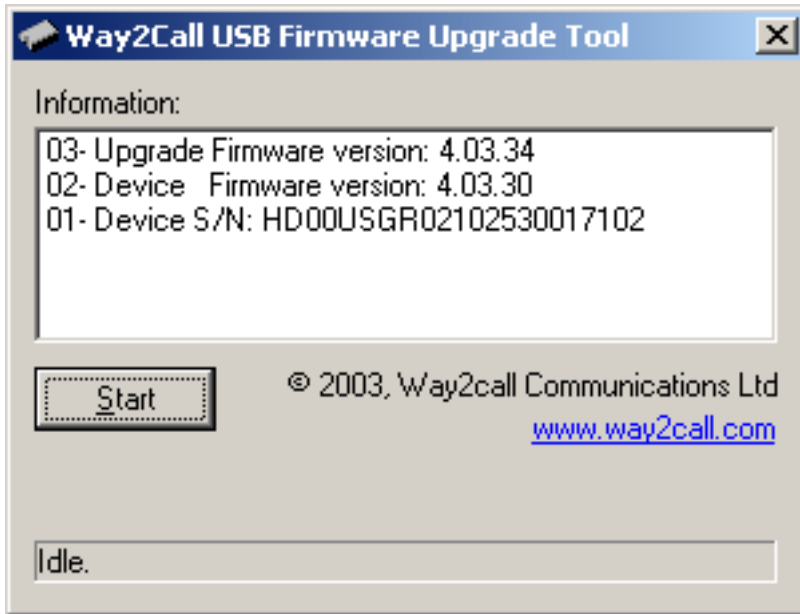
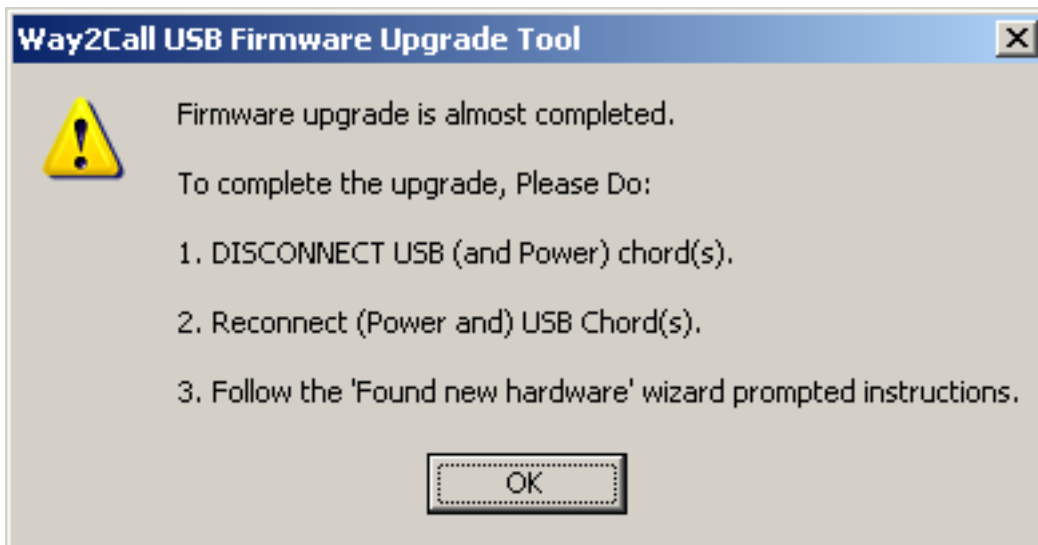


## Hi-Phone Desktop USB Firmware Update Procedure (1.01)

- Download the Hi-Phone Desktop USB firmware update utility from [www.way2call.com](http://www.way2call.com) >>> **downloads**.
  - Make sure that you are downloading the correct firmware update for your device. This can be verified by checking your device Part Number (P/N).
- Extract the Zip file contents to a separate folder.
- Run the executable file - **wUsbFw.exe**.
- Follow the on-screen instructions:



1. The program will show version and serial number information.  
Click "Start" to start firmware update process.



2. When prompted, disconnect the USB cord and then the power adapter.  
Wait at least 5 seconds before reconnecting the power adapter first and then the USB cord.



If this is your first update on this computer, You will see a plug and play pop-up balloon message...



3. "Welcome to the Found New Hardware Wizard" window will pop-up.  
For the question - "Can Windows Connect...", choose - "No, not at this time", and click "Next".

## Found New Hardware Wizard



This wizard helps you install software for:

Hi-Phone Desktop USB Loader



**If your hardware came with an installation CD or floppy disk, insert it now.**

What do you want the wizard to do?

- Install the software automatically (Recommended)
- Install from a list or specific location (Advanced)

Click Next to continue.

< Back

Next >

Cancel

4. On the next window, choose “Install from a list or specific location”, and click “Next”.

## Found New Hardware Wizard

Please choose your search and installation options.



Search for the best driver in these locations.

Use the check boxes below to limit or expand the default search, which includes local paths and removable media. The best driver found will be installed.

Search removable media (floppy, CD-ROM...)

Include this location in the search:

C:\Hi-Phone Firmware Update

Browse

Don't search. I will choose the driver to install.

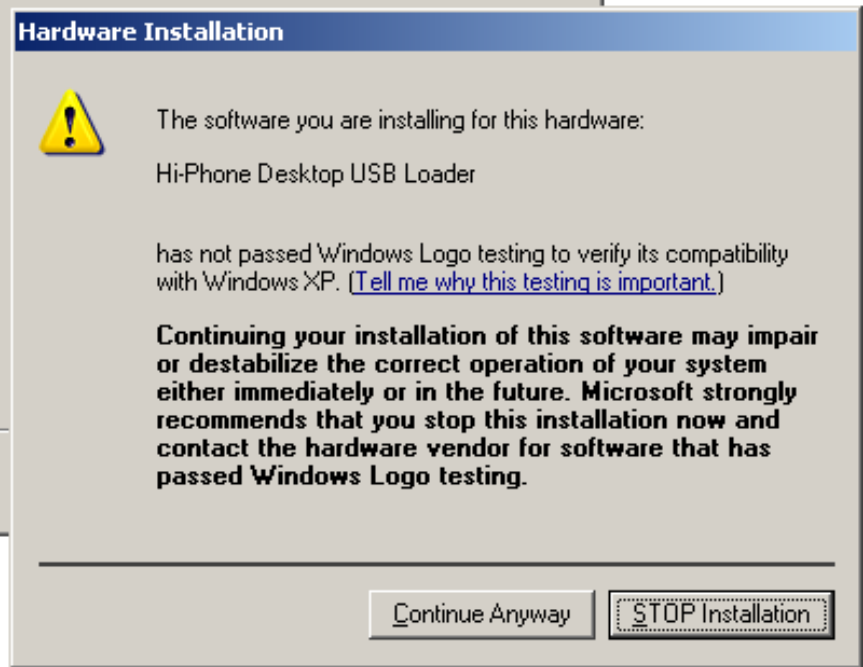
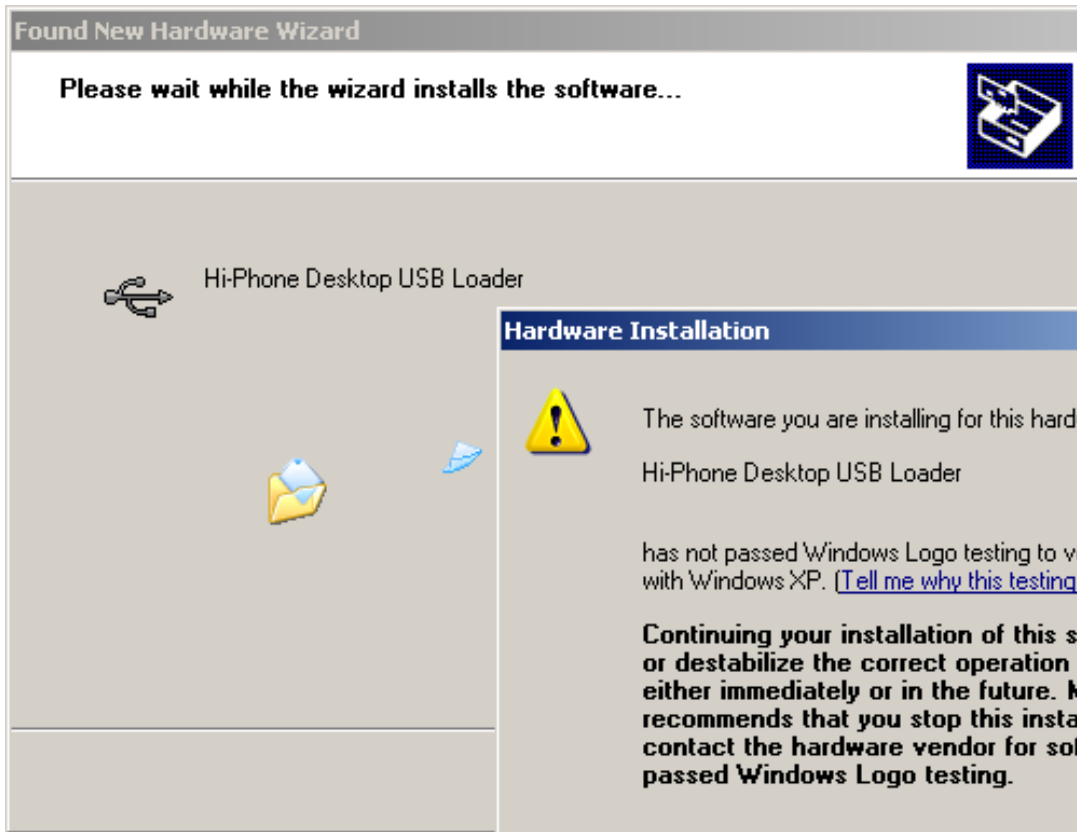
Choose this option to select the device driver from a list. Windows does not guarantee that the driver you choose will be the best match for your hardware.

< Back

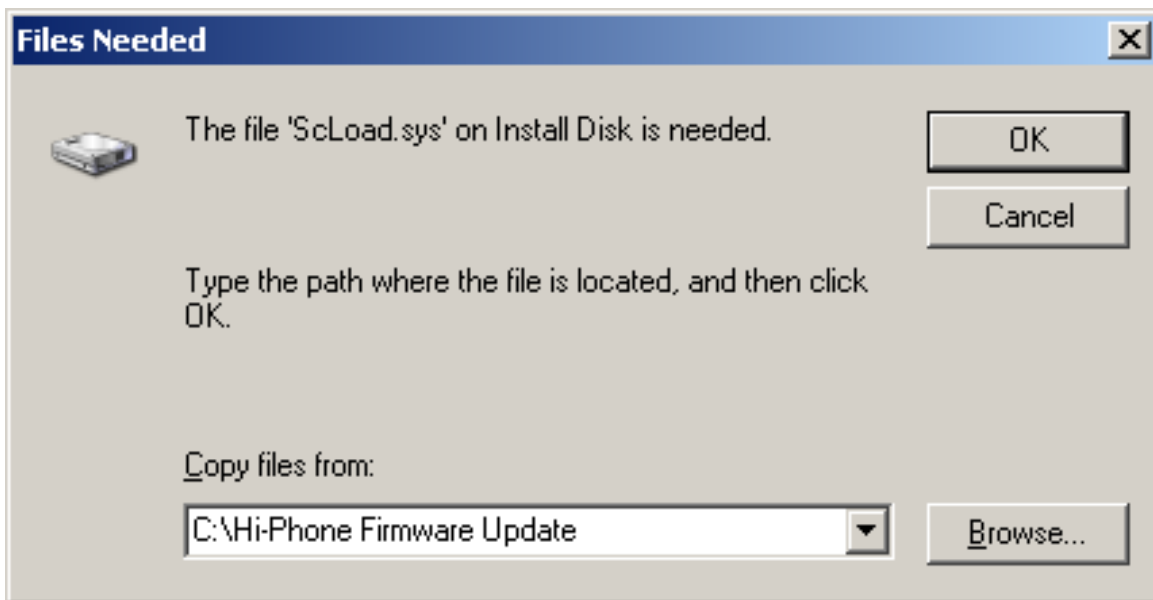
Next >

Cancel

5. When prompt for search option, choose “Search for the best driver in these locations” and select “Include this location in the search:”.  
Click “Browse” and find the folder where the firmware files are stored. Click “Open”.  
Click “Next”.



The wizard will start copying files, and display this message. Click “Continue Anyway”.



6. If prompted for a file needed, browse to the folder where the firmware files are stored. The file “ScLoad.sys” will be presented. Click “Open”. Click “OK”.



7. On the next window, "Completing the Found New Hardware Wizard" - click "Finish".

- **Your Hi-Phone device firmware is updated!**